



Qingdao AMA CO.,LTD



企业简介



青岛金典生化器材有限公司成立于1992年，在台湾有分公司。公司致力于医院和实验室一次性医疗用品的研发、制造、销售。经过20多年的发展，积累了丰富的客户资源和实际的经验。公司视产品质量为企业生命，按照国际质量体系标准建立了一整套严格的内部质量控制体系，通过ISO9001，ISO13485和CE认证，良好的产品品质和高性价比使产品具有高竞争力和好评率。公司引进先进技术和设备，对员工进行系统培训，持续改进生产技术水平。积极开展OEM和ODM等多种合作，欢迎新老客户来电洽谈业务，共创双赢。



Qingdao AMA Co., Ltd. was established in 1992 and has branches in Taiwan. The company is committed to the research and development, manufacturing and sales of disposable medical supplies in hospitals and laboratories. After more than 20 years of development, it has accumulated rich customer resources and practical experience. The company regards product quality as the life of the company, and has established a set of strict internal quality control system in accordance with the international quality system standards. It has passed ISO9001, ISO13485 and CE certification, and the products have high competitiveness and favorable rate due to good product quality and high cost performance. The company introduces advanced technology and equipment, systematically trains employees, and continuously improves production technology. Actively carry out various cooperations such as OEM and ODM, welcome new and old customers to call to discuss business and create a win-win situation.

QUALITY-ORIENTED INTEGRITY MANAGEMENT



Contents

01-10 Cell culture dish

11-12 96-well microplate

13-15 Petri dish

16-23 Blood collection tube

24-26 Centrifuge tube

27-28 Serological pipette

29-30 Pasteur pipette

31-32 Test tube

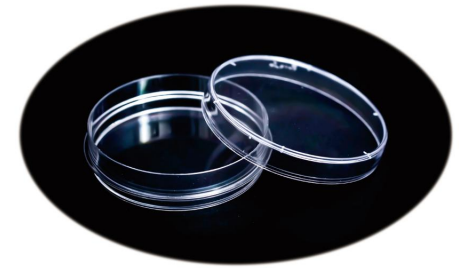
33-36 Other consumables

CELL CULTURE DISH



Alpha PlusP Pseudo-Collagen tissue culture products

Alpha PlusP uses plasma technology to coat collagen-like materials to the surface of the culture dish. Its function is similar to that of collagen-coated culture dishes. It can omit the cumbersome production process of collagen coating, can be mass-produced, and has low production cost and high competitiveness. The performance is superior to the traditional oxygen plasma processing culture dish, it has a wider range of use and belongs to advanced product.

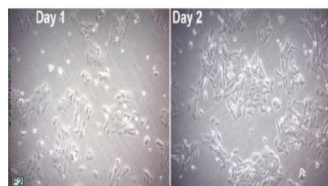


Type	Spec.	Surface treatment	Application	Sterilization
Alpha Plus P	6 wells (flat bottom)	Collagen Type	Cells that require adherent culture	Electron beam
	12wells (flat bottom)			
	24wells (flat bottom)			
	48wells (flat bottom)			
	96wells (flat bottom)			
	25cm ² Flask	Collagen Type		
	25cm ² Flask Vent			
	75cm ² Flask			
	75cm ² Flask Vent			
	60mm Dish	Collagen Type		
	100mm Dish			
	120mm Dish			

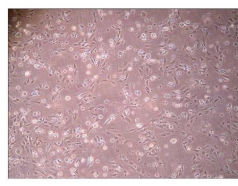
Alpha PlusP

It replaces the petri dish that coated collagen , the applied material is free from animals, and has repeatable and stable test result , long shelf life, and room temperature stored .

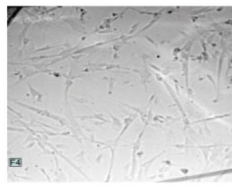
Alpha PlusP—product application



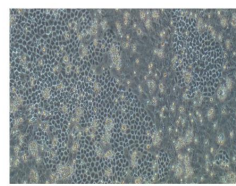
Adult Rat Brain Endothelial cells(ARBEs)seed on 100x20mm Alpha PlusP dish



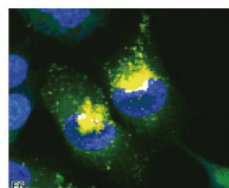
Hepatocyte culture



100x immortalized hepatocyte

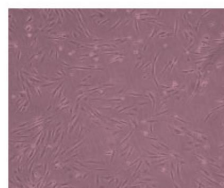


Lung epithelial progenitor colony4X

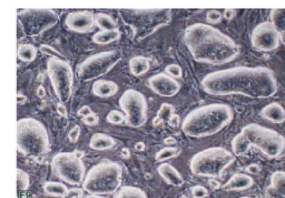


lung small cell cancer
NCI-H1299

Prolinol can coated on the bottom glass dish for confocal microscope investigate the life phenomenon of cell.



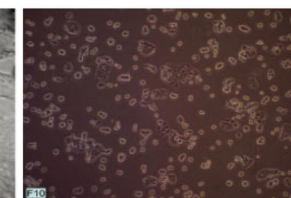
MSC culture 4x



Mice embryonic stem cell



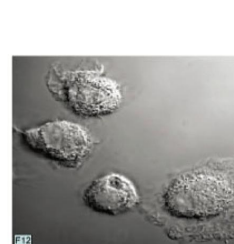
PreS2-DIC



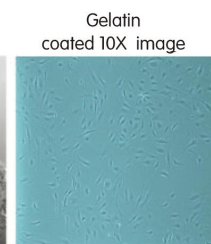
Hct 15



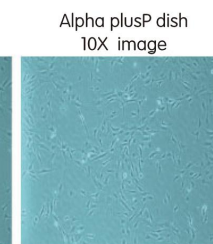
HT 29



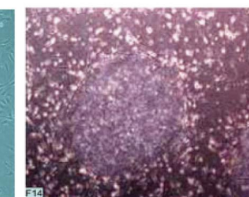
human macrophage



Human Umbilical Vein Endothelial Cell(HUVEC)



hESC culture



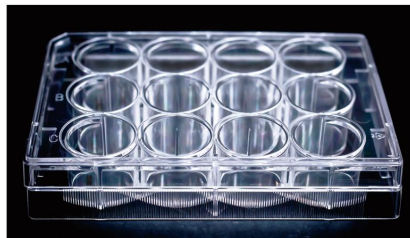
PC12 Cell Culture

It is applied to the primary cell culture, liver and kidney cell culture, endothelial cells, neovascular cells, tumor cells, neuro cells and stem cells differentiation.



Alpha PlusS ultra low-binding cell culture product

The special amphiphilic polymer is coated on the surface of the culture dish. Due to the hydrophilicity of the compound, the phosphocholine amphiphilic molecule can adsorb 7-8 water molecules to form a water wall, which makes cells, protein molecules and bacteria cannot be attached to the culture dish.



Type	Spec.	Surface treatment	Application	Sterilization
Alpha Plus S	6 wells (flat bottom)	Ultra Low Binding Surface	Cells that require suspension culture	UV lamp Ultraviolet Rays
	12wells (flat bottom)			
	24wells (flat bottom)			
	48wells (flat bottom)			
	96wells (flat bottom)			
	25cm ² Flask	Ultra Low Binding Surface		
	25cm ² Flask Vent			
	75cm ² Flask			
	75cm ² Flask Vent			
	60mm Dish	Ultra Low Binding Surface		
	100mm Dish			
	120mm Dish			

Alpha PlusS—product application

- 1.Embryonic bodies culture
- 2.enhance 3D spheroid cell cultures
- 3.neurospheres culture
- 4.anti-cell binding property research
- 5.tumorspheres culture
- 6.anchorage independent growth study.
- 7.monocytes ,macrophages,lymphocytes,neutrophils culture
- 8.study activation and inactivation mechanism of monocyte, lymphocyte, macrophages and other phagocytes



Alpha PlusS—product advantages

1. There are less than 10 petri dish manufacturers that is capable of producing ultra-low protein adsorption in the world. The products we develop are of the same grade as foreign low-protein adsorption products, cost-effective and competitive. The size and style of the products can satisfy customers.
2. It can be used to culture fetal cells and blood cells, and cells that must be grown in suspension culture; it is used for the collection and storage of rare samples, and for anti-adhesive properties of strongly viscous cells.

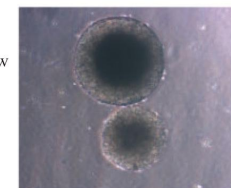
Alpha PlusS—product application

Conventional TCT surface



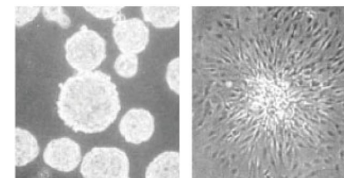
Embryoid bodies attach to surface and show poor morphology and randomly differentiating cells (murine ES cells)

Ultra Low Binding Surface



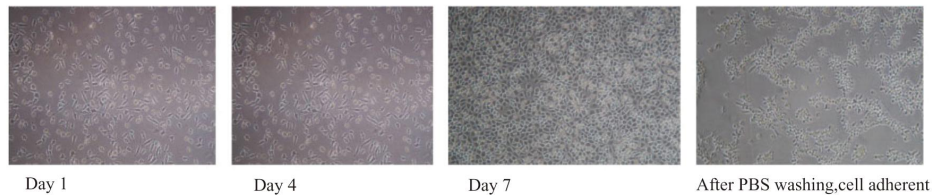
Enables tight, well-defined, undifferentiated embryoid body formation (murine ES cells)

Glioma cell culture

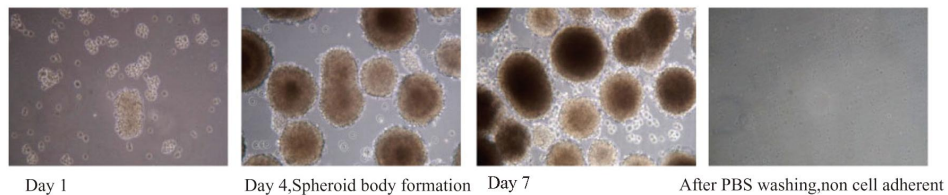


Left:
Glioma cell spheroid formation on Ultra low binding PS surface

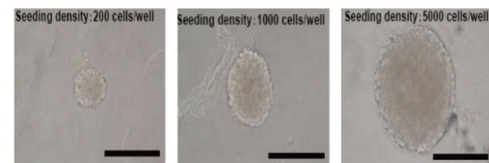
Right:
Glioma cell attach and spread on TC treated PS surface



L929 cell culture on 6-well ULB plate

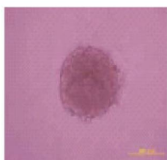
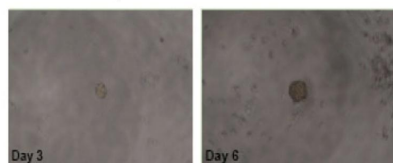


Neurospheres formed on the MPC copolymer coated ULB

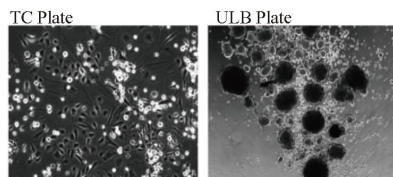


dishes on day 5

PC12 cell cultured on Ultra low binding dish
formation of spheroid bodies PC12



Tumor spheroid body
formation on Ultra Low
Binding dish HeLa (100x),
1000 cells/well



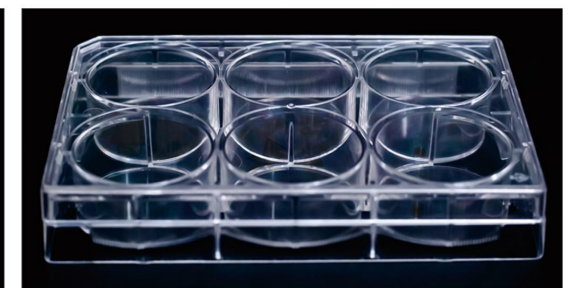
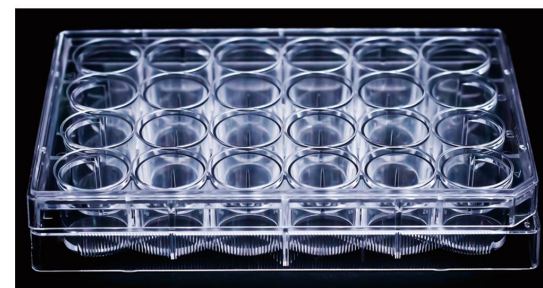
Cell seeding: 5×10^3 3 cells/per well, at Day 1 on 24-well TC plate (left)
Cell seeding: 5×10^3 3 cells/per well, at Day 1 on 24-well ULB plate (right)

Spheroid body formation
on 24-well Ultra Low Binding
plate of Alpha Plus.

Alpha PlusT Standard cell culture product

Type	Spec.	Surface treatment	Application	Sterilization
Alpha Plus T	6wells (flat bottom)	Vauum-Gas Plasma	Cells that require adherent culture	Electron beam
	12wells (flat bottom)			
	24wells (flat bottom)			
	48wells (flat bottom)			
	96wells (flat bottom)			
	25cm ² Flask	Vauum-Gas Plasma		
	25cm ² Flask Vent			
	75cm ² Flask			
	75cm ² Flask Vent			
	60mm Dish	Vauum-Gas Plasma		
	100mm Dish			
	120mm Dish			

Jindian's standard tissue culture dishes, culture plates and culture flasks are treated with special vacuum gas plasma. The surface can be continuously and uniformly deposited with hydroxyl and carboxyl groups, it is used for general cell culture.



Alpha PlusG Glass-bottomed pseudo-collagen culture dish 3.5cm Bottom Glass Dish

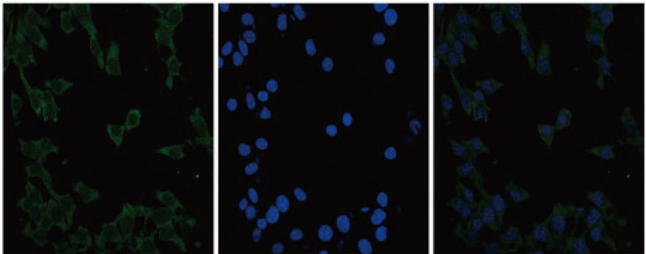
1. Apply borosilicate glass to a hollow 3.5 cm PS material culture dish;
2. The glass bottom culture dish is coated with pseudo-collagen which is not derived from animals;
3. The cells can be cultured directly on a glass bottom culture dish;
4. 0.017-0.019cm thickness borosilicate glass, can observe the clear magnified image of the object under the conjugate focal microscope, while the thickness of the general culture dish is more than 0.1cm, because the focus of the light source can not reach the object to be observed, so it can not Obtain a clear image of the object in the magnifying lens.

Type	Spec.	Surface treatment	Application	Sterilization
Alpha Plus G	35*12mm	Bottom Glass Dish Application for Confocal Microscopy	Used in confocal microscope	Electron beam

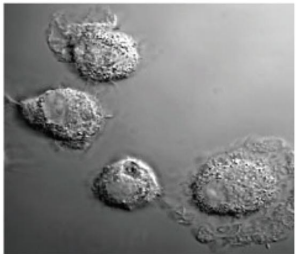
Alpha PlusG—product application

1. For observation of cell membrane, nuclear and intracellular metabolites and cell constituent molecules under fluorescence microscope;
2. For conjugated focal microscope, directly observe the cultured cell structure and metabolites and intercellular transport substances.

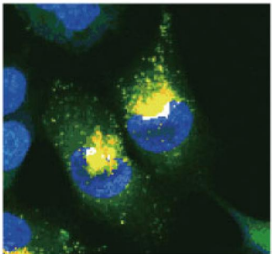
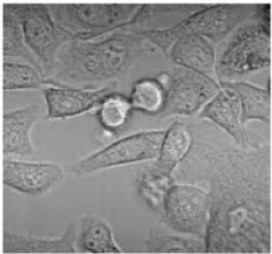
Alpha PlusG—product application



B16F10 melanoma cell sees on



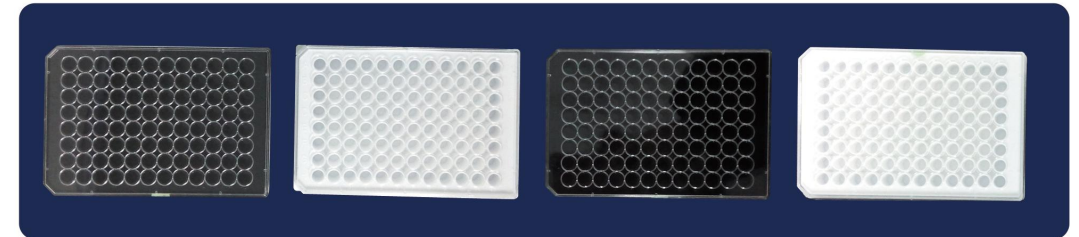
Human macrophage


Lung small cell cancer
NCI-H1299


Hepatitis B virus PreS2-DIC



96-well microplate



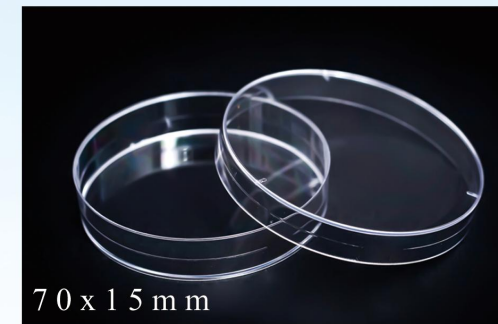
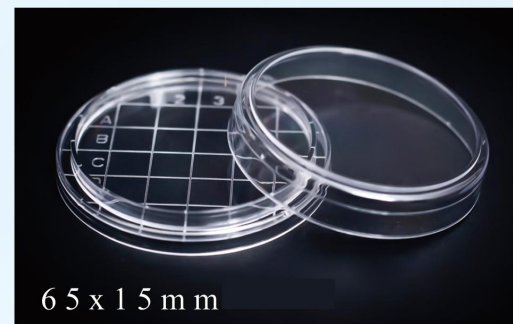
96-well microplate

Number	Colour	Description	Surface treatment	Material	Sterilization	Instructions
16196-3NCM	Clear	96 well transparent flat bottom plate, polysorp γ immunoglobulin maximum adsorption capacity < 200ng/cm ²	Medium adsorption ELISA plate	PS	Nonsterile	Reading under visible light, using a color developer to measure the absorbance of the analyte at a wavelength of visible light of 450 nm for detecting the concentration of the substance.
16196-3NCH	Clear	96 well transparent flat bottom plate, Maxisorp γ immunoglobulin maximum adsorption capacity >500ng/cm ²	Highly adsorbed ELISA plate	PS	Nonsterile	Reading under visible light, using a color developer to measure the absorbance of the analyte at a wavelength of visible light of 450 nm for detecting the concentration of the substance.
16196-3SSC	Clear	Fully transparent flat-bottomed cover with CMP surface treated by plasmon and gamma-sterilized TC plate with a thickness of 1mm on the bottom plate. Water drop angle <10°	TC treated	PS	Sterile	For general adherent cell culture
16196-3NWM	White	96 well white opaque cold disc, Polysorp γ immunoglobulin maximum adsorption capacity <200ng/cm ²	Medium adsorption ELISA plate	PS	Nonsterile	In the cold light reading, the maximum emission wavelength of the luminescent reagent is used to measure the absorbance of the reaction between the enzyme-linked antibody and the luminescent molecule at this wavelength, and the concentration of the detected substance is analyzed.
16196-3NWH	White	96 well white opaque cold disc, Maxisorp γ immunoglobulin maximum adsorption capacity >500ng/cm ²	Highly adsorbed ELISA plate	PS	Nonsterile	In the cold light reading, the maximum emission wavelength of the luminescent reagent is used to measure the absorbance of the reaction between the enzyme-linked antibody and the luminescent molecule at this wavelength, and the concentration of the detected substance is analyzed.
16196-3SSW	White	White opaque cover with CMP surface treatment and gamma sterilized TC plate, bottom plate thickness 1mm culture plate Water drop angle <10°	TC treated	PS	Sterile	For general adherent cell culture
16196-3NBM	Black	96 well black opaque fluorescent disk, polysorp γ immunoglobulin maximum adsorption capacity <200ng/cm ²	Medium adsorption ELISA plate	PS	Nonsterile	Reading under fluorescence, using a fluorescent reagent to excite the light with a short wavelength, illuminating the fluorophore to produce a long-wavelength emission of light at the receiver for quantifying the concentration of the analyte.
16196-3NBH	Black	96 well black opaque fluorescent plate, Maxisorp γ immunoglobulin maximum adsorption capacity >500ng/cm ²	Highly adsorbed ELISA plate	PS	Nonsterile	Reading under fluorescence, using a fluorescent reagent to excite the light with a short wavelength, illuminating the fluorophore to produce a long-wavelength emission of light at the receiver for quantifying the concentration of the analyte.
16196-3SSB	Black	Black opaque cover with CMP surface treatment and gamma sterilized TC plate, bottom plate thickness 1mm culture plate Water drop angle <10°	TC treated	PS	Sterile	For general adherent cell culture

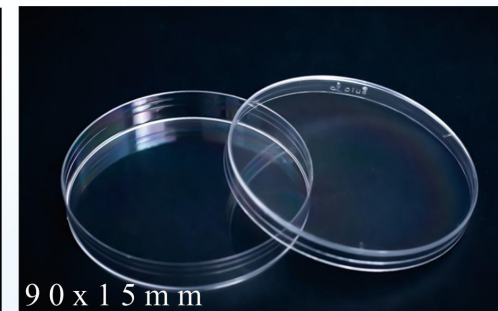
BACTERIAL CULTURE DISH

The Jindian Petri dish is made of imported high-quality polystyrene or polycarbonate, and its performance is stable and crystal clear. There are many varieties, multiple sizes and multi-functions for customers to choose. The product is sterilized by EO or Gamma rays and can be widely used in bacterial culture and drug sensitivity experiments.

α PLUS[®]



Description	Material	Qty/bag	Qty/ctn
35mm*15mm Petri dish	PS	20	2600
60mm*15mm Petri dish	PS	26	1040
65mm*15mm Petri dish (grid numbers)	PS	20	1000
70mm*15mm Petri dish	PS	20	700
75mm*15mm Petri dish (ear)	PS	10	360

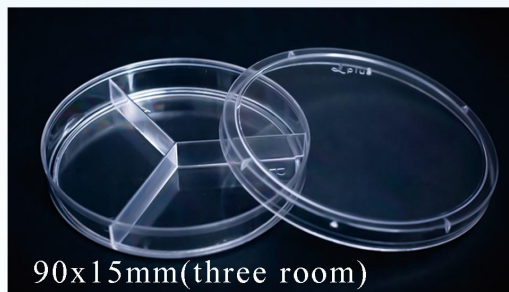




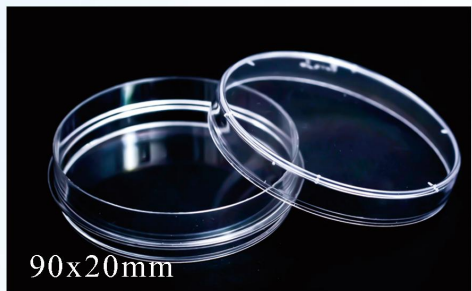
Description	Material	Qty/bag	Qty/ctn
90mm*15mm Petri dish	PS	10	500
90mm*15mm Petri dish (two room)	PS	10	500
90mm*15mm Petri dish (three room)	PS	10	500
90mm*20mm Petri dish	PS	15	375
150mm*15mm Petri dish	PS	10	180



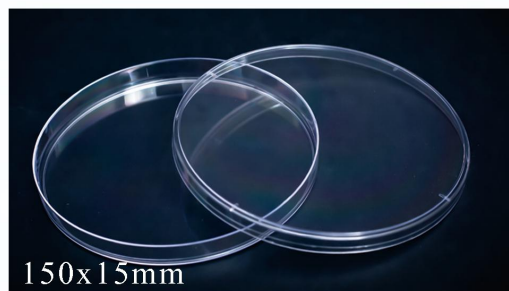
90x15mm(two room)



90x15mm(three room)



90x20mm



150x15mm



BLOOD COLLECTION TUBE

High quality High efficiency
The leader of the industry!

Vacuum blood collection tube



- plain tube
- Serum biochemical test, serum immunological test



Type	Color	Material	Size	Volume	Additive	Packing
No Additive Tube	RED	Glass	13×75mm	1-5ml	No additive	100pcs/plate 1800pcs/ctn
		Glass	13×100mm	5-7ml		100pcs/plate 1800pcs/ctn
		PET	13×75mm	1-5ml		100pcs/plate 1800pcs/ctn
		PET	13×100mm	5-7ml		100pcs/plate 1800pcs/ctn
		PET	16×100mm	7-10ml		100pcs/plate 1000pcs/ctn

Type	Color	Material	Size	Volume	Additive	Packing
Pro-Coagulation Tube	ORANGE	Glass	13×75mm	1-5ml	Clot Additive	100pcs/plate 1800pcs/ctn
		Glass	13×100mm	5-7ml		100pcs/plate 1800pcs/ctn
		PET	13×75mm	1-5ml		100pcs/plate 1800pcs/ctn
		PET	13×100mm	5-7ml		100pcs/plate 1800pcs/ctn
		PET	16×100mm	7-10ml		100pcs/plate 1000pcs/ctn

Clot activator

- Pro-coagulation tube
- Serum biochemical test, serum immunological test



Type	Color	Material	Size	Volume	Additive	Packing
Gel&Clot Activator tube	YELLOW	Glass	13×75mm	1-5ml	Gel&Clot Additive	100pcs/plate 1800pcs/ctn
		Glass	13×100mm	5-7ml		100pcs/plate 1800pcs/ctn
		PET	13×75mm	1-5ml		100pcs/plate 1800pcs/ctn
		PET	13×100mm	5-7ml		100pcs/plate 1800pcs/ctn
		PET	16×100mm	7-10ml		100pcs/plate 1000pcs/ctn



Gel & Clot activator

- Gel & Clot activator tube
- Serum biochemistry, serum immunoassay, drug testing



Type	Color	Material	Size	Volume	Additive	Packing
Heparin Lithium Tube	绿色 GREEN	Glass	13×75mm	1-5ml	Heparin Sodium	100pcs/plate 1800pcs/ctn
		Glass	13×100mm	5-7ml		100pcs/plate 1800pcs/ctn
		PET	13×75mm	1-5ml	Heparin Lithium	100pcs/plate 1800pcs/ctn
		PET	13×100mm	5-7ml		100pcs/plate 1800pcs/ctn
		PET	16×100mm	7-10ml		100pcs/plate 1000pcs/ctn

Heparin Lithium Tube

- Heparin Lithium Tube
- Emergency biochemical testing, plasma biochemical testing, electrolyte testing

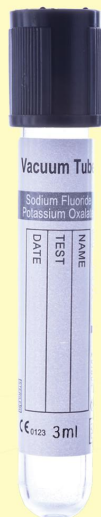




Type	Color	Material	Size	Volume	Additive	Packing
EDTA Tube	PURPLE	Glass	13×75mm	1-5ml	EDTA K2 EDTA K3	100pcs/plate 1800pcs/ctn
		Glass	13×100mm	5-7ml		100pcs/plate 1800pcs/ctn
		PET	13×75mm	1-5ml		100pcs/plate 1800pcs/ctn
		PET	13×100mm	5-7ml		100pcs/plate 1800pcs/ctn
		PET	16×100mm	7-10ml		100pcs/plate 1000pcs/ctn

- EDTA K2/K3 tube
- Hematology testing program, red blood cells, white blood cells, platelets, white blood cell classification experiments; hemoglobin and hematocrit detection
- Glucose tube: Blood glucose test

Type	Color	Material	Size	Volume	Additive	Packing
Glucose Tube	GREY	Glass	13×75mm	1-5ml	Potassium Oxalate&Sodium Flouride	100pcs/plate 1800pcs/ctn
		Glass	13×100mm	5-7ml		100pcs/plate 1800pcs/ctn
		PET	13×75mm	1-5ml		100pcs/plate 1800pcs/ctn
		PET	13×100mm	5-7ml		100pcs/plate 1800pcs/ctn
		PET	16×100mm	7-10ml		100pcs/plate 1000pcs/ctn



Type	Color	Material	Size	Volume	Additive	Packing
PT Tube (Citrate tube)	BLUE	Glass	13×75mm	1-5ml	3.2% Sodium Citrate	100pcs/plate 1800pcs/ctn
		Glass	13×100mm	5-7ml		100pcs/plate 1800pcs/ctn
		PET	13×75mm	1-5ml		100pcs/plate 1800pcs/ctn
		PET	13×100mm	5-7ml		100pcs/plate 1800pcs/ctn
		PET	16×100mm	7-10ml		100pcs/plate 1000pcs/ctn

PT Tube

- PT tube : Serum agglutination test





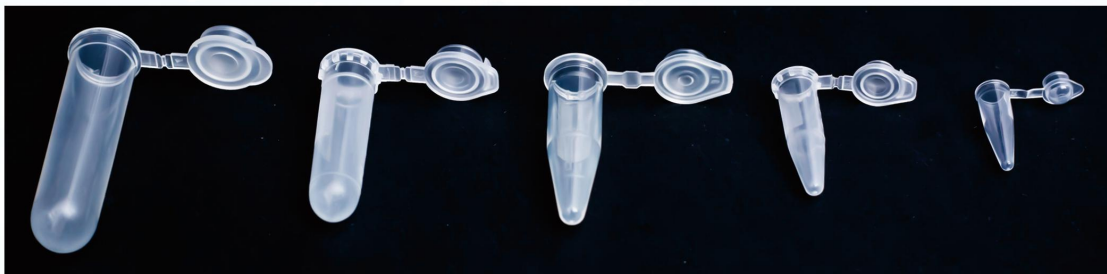
Type	Color	Material	Size	Volume	Additive	Packing
ESR Tube	BLACK	Glass	13×75mm	1-5ml	3.8% Sodium Citrate	100pcs/plate 1800pcs/ctn
		Glass	13×100mm	5-7ml		100pcs/plate 1800pcs/ctn
		PET	13×75mm	1-5ml		100pcs/plate 1800pcs/ctn
		PET	13×100mm	5-7ml		100pcs/plate 1800pcs/ctn
		PET	16×100mm	7-10ml		100pcs/plate 1000pcs/ctn

- ESR Tube
- ESR blood cell sedimentation rate determination



Centrifuge tube

The Jindian centrifuge tube is made of high transparent polyphenylene material, which is resistant to high temperature and pressure and can be centrifuged at high speed without breaking. Excellent sealing performance can effectively prevent the leakage of specimens. A variety of styles are available in a variety of sizes to meet different experimental needs.



Centrifuge tube



Centrifuge tube



urine sediment tube

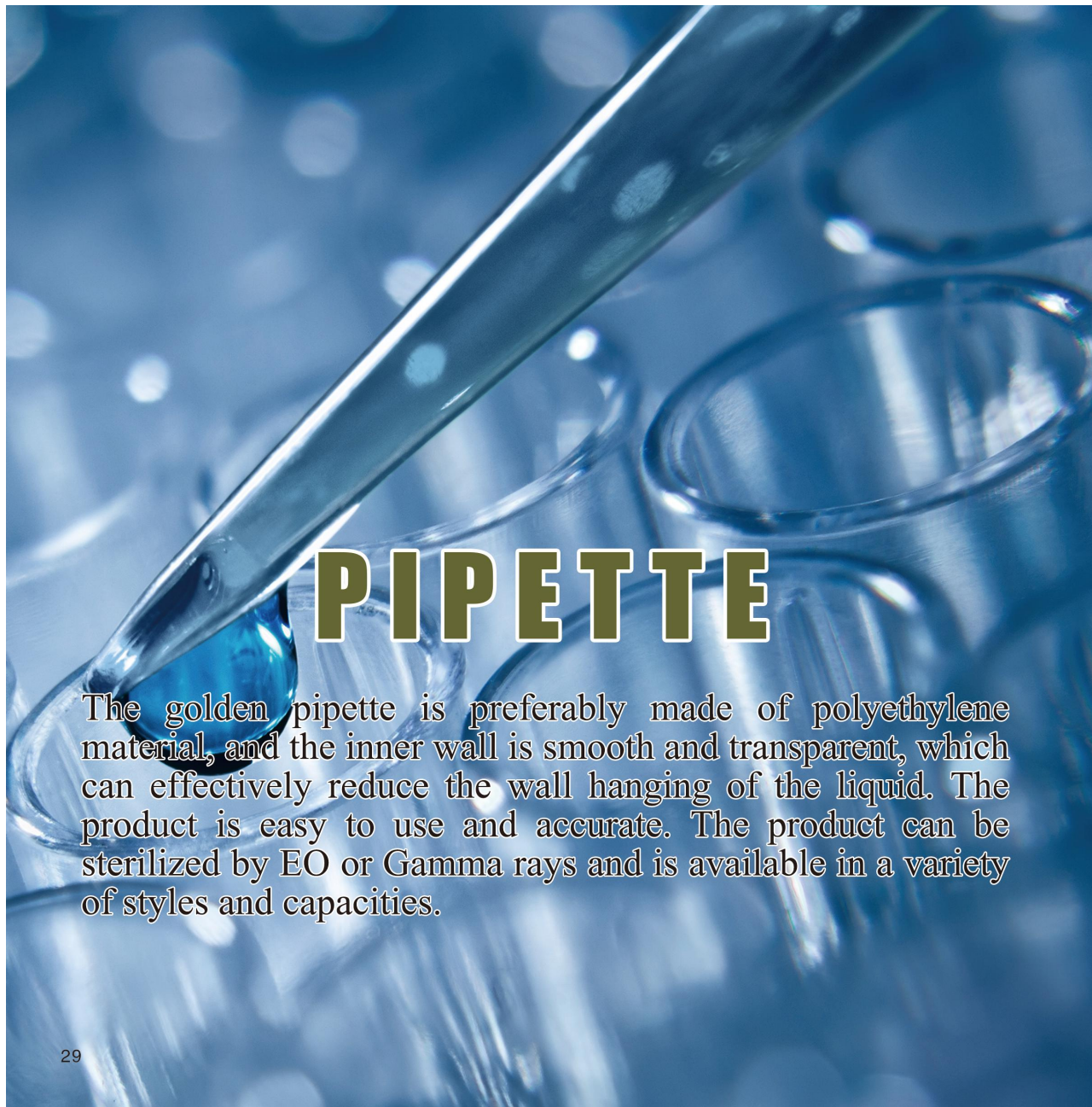
NAME	QUANTITY	PACKAGE
0.5ml	20000	1000pcs/bag*20bags
1.5ml	20000	1000pcs/bag*20bags
2ml	10000	500pcs/bag*20bags
5ml	6000	300pcs/bag*20bags
10ml (concial bottom urine centrifuge tube)	1200	20pcs/bag*60bags
15ml (concial bottom centrifuge tube)	1000	100pcs/bag*10bags
50ml (concial bottom centrifuge tube)	500	50pcs/bag*10bags
50ml (round bottom centrifuge tube)	500	50pcs/bag*10bags
12ml (urine sediment tube)	2400	200pcs/bag*12bags

SEROLOGICAL PIPETTE



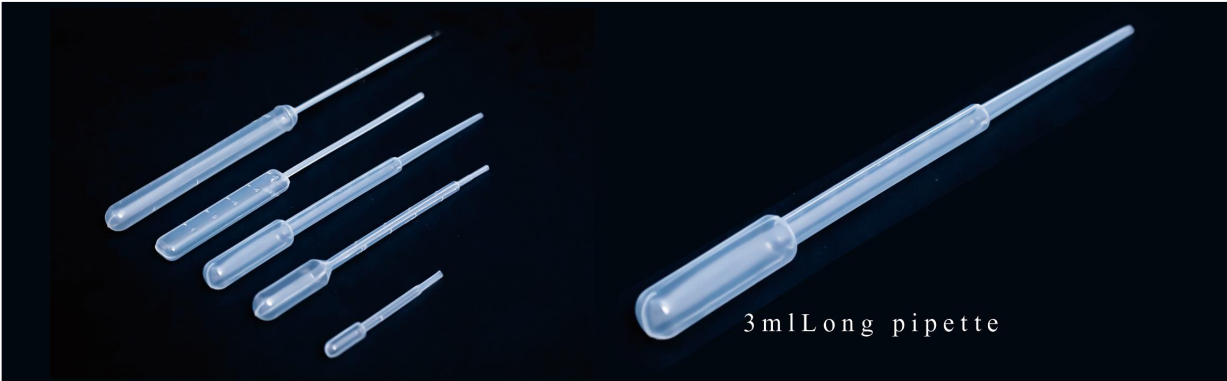
The pipette is made of transparent polymer material polystyrene, which is smooth and transparent, which can reduce the wall hanging phenomenon of the liquid, and is mainly used for accurately measuring a certain volume of liquid. The product has two kinds of non-sterile and gamma sterilization, the scale is clear, and the negative scale of extra capacity is added, which is convenient for liquid absorption and reading. It can be widely used in tissue culture, bacteriology, clinical and scientific research experiments.

NAME	SCALE	NEGATIVE SCALE	COLOR RING	PACKAGE
1ml	1.0	1/100	yellow	Single package ,3000pcs/ctn
2ml	2.0	1/50	green	Single package ,3000pcs/ctn
5ml	5.0	1/10	blue	Single package ,2000pcs/ctn
10ml	10.0	1/10	Orange	Single package ,1600pcs/ctn
25ml	25.0	2/10	red	Single package ,600pcs/ctn

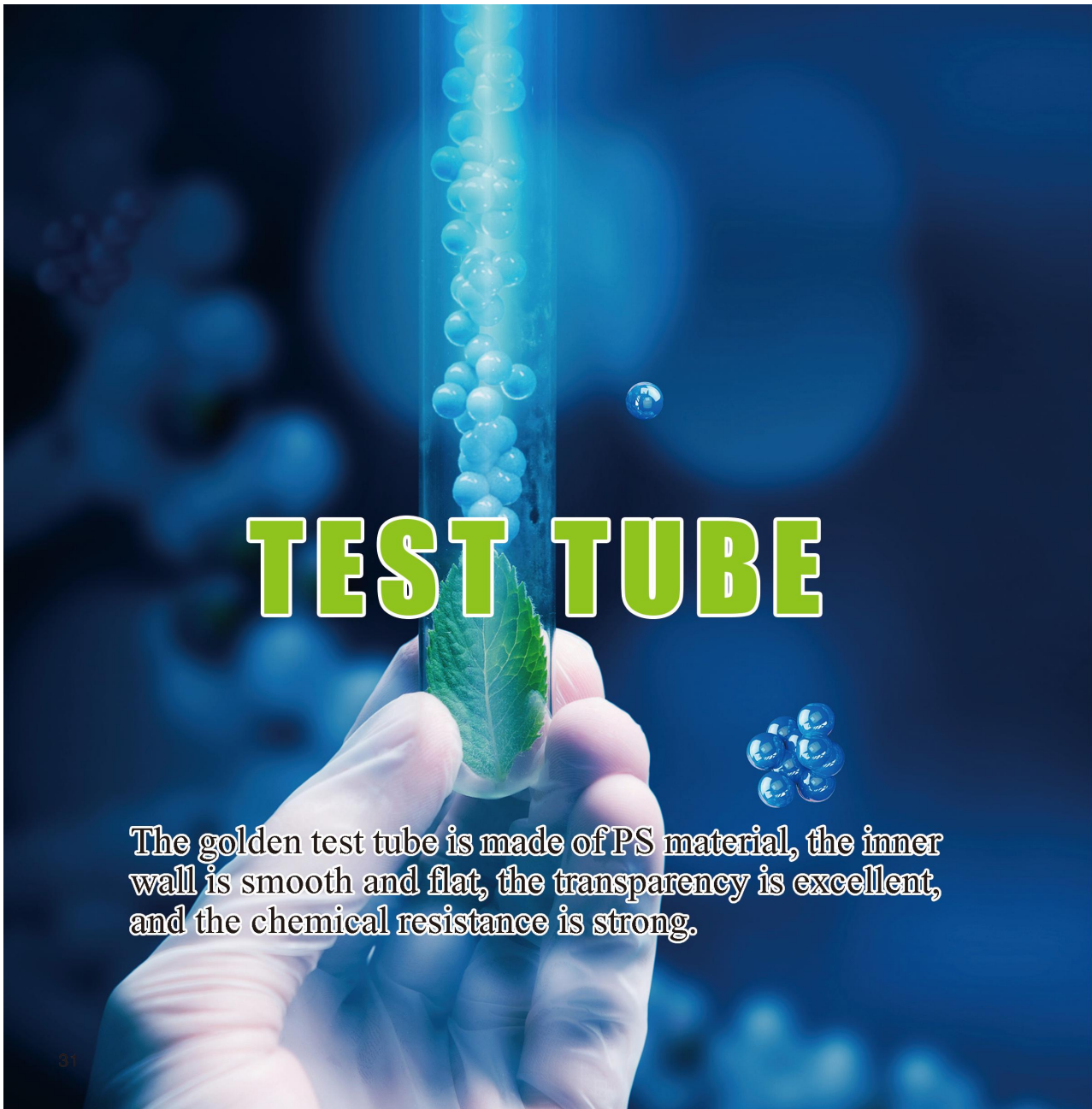


PIPETTE

The golden pipette is preferably made of polyethylene material, and the inner wall is smooth and transparent, which can effectively reduce the wall hanging of the liquid. The product is easy to use and accurate. The product can be sterilized by EO or Gamma rays and is available in a variety of styles and capacities.



NAME	QUANTITY (PCS/CTN)	PACKAGE
0.5ml pipette	20000	1000pcs/bag*20bags
1ml pipette	5000	250pcs/bag*20bags
1ml pipette	3000	Single package
3ml pipette	5000	250pcs/bag*20bags
3ml pipette	3000	Single package
5ml pipette	5000	100pcs/bag*50bags
5ml pipette	3000	Single package
10ml pipette	3500	100pcs/bag*35bags



TEST TUBE

The golden test tube is made of PS material, the inner wall is smooth and flat, the transparency is excellent, and the chemical resistance is strong.

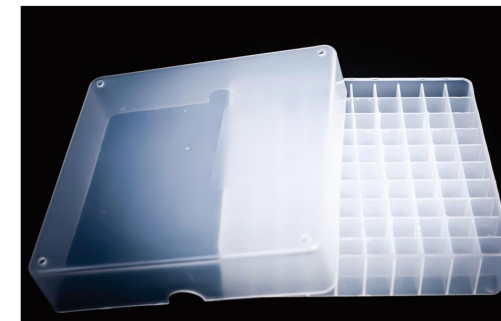


NAME	MATERIAL	QUANTITY (PCS/CTN)	PACKAGE
12*55mm	PS	5000	500/5000pcs
12*75mm	PS	5000	250/5000pcs
12*75mm(with stopper sterile)	PS	5000	200/5000pcs
12*100mm	PS	4000	100/4000pcs
12*100mm(with stopper sterile)	PS	5000	100/5000pcs
16*100mm	PS	2400	100/2400pcs
16*100mm(with stopper sterile)	PS	2400	20/2400pcs and 100/2400pcs

OTHER PRODUCTS



Cryo tube

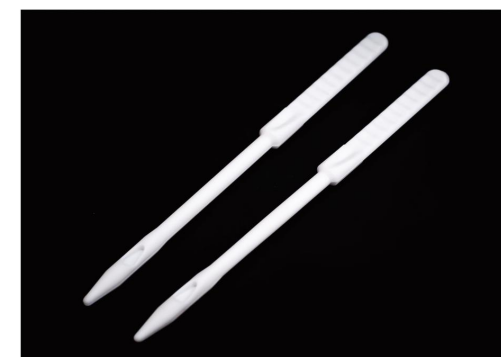


Cryo box

NAME	QUANTITY(PCS/CTN)	PACKAGE
1.8ml Scale cryo tube	5 500	500pcs/bag*11bags
5ml Scale cryo tube	2 000	200pcs/bag*10bags
100 Hole Cryo box	76	Single package



Inoculation loops



Stool picking bar

NAME	QUANTITY(PCS/CTN)	PACKAGE
1ulInoculation loops	1 000	25pcs/bag*40bags
10ulInoculation loops	1 000	25pcs/bag*40bags
Inoculation needle	1 000	25pcs/bag*40bags
Stool picking bar	7 500	50pcs/bag*150bags



Sample cup



Microscope slide



Component cup

NAME	QUANTITY(PCS/CTN)	PACKAGE
40ml Sample cup	600	20pcs/bag*30bags
120ml Sample cup	250	Single package
75*26mm Microscope slide	6000	150pcs/box*40bags



Embedding cassette

NAME	QUANTITY(PCS/CTN)	PACKAGE
Embedding cassette white, green, blue, purple	2500	250pcs/bag*10bags



Sample cup / stool collection cup




Pipette tip



Disposable urine specimen collector



NAME	QUANTITY(PCS/CTN)	PACKAGE
Urine cup	250	250pcs/ctn
Urine collection tube	1000	1000pcs/ctn



Thank you for your
attention.